

## MEON ROAD, W3

Approx. gross internal area 556 Sq Ft. / 51.7 Sq M

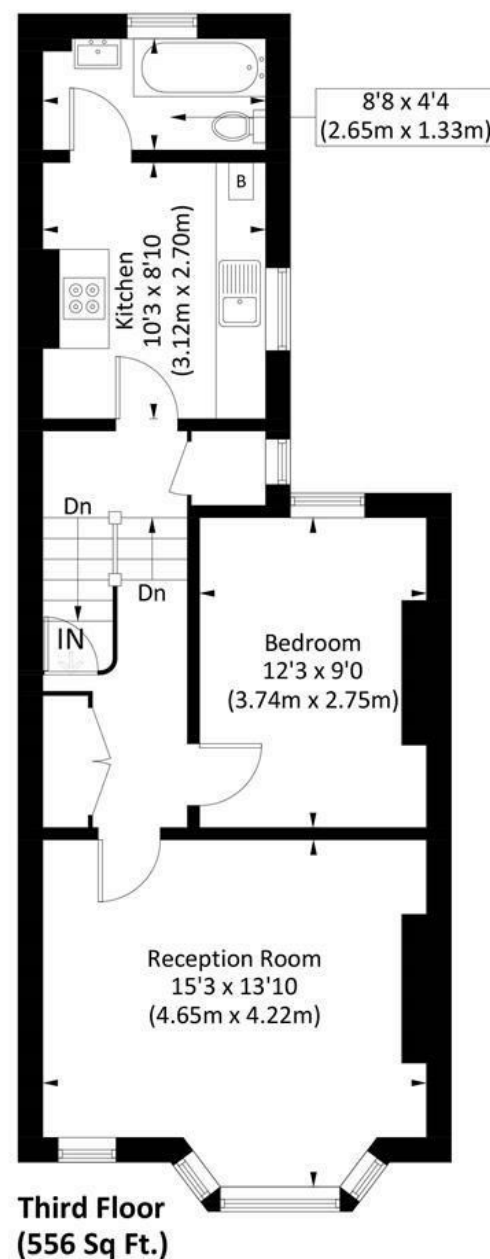


Illustration for identification purposes only, measurements are approximate, not to scale. FloorplansUsketch.com © 2026 (ID1277376)

**DISCLAIMER**•These particulars are intended to give a fair and substantially correct overall description for the guidance of intending purchasers and do not constitute an offer or part of a contract. Prospective purchasers and/or lessees ought to seek their own professional advice.

•All descriptions, dimensions, areas, references to condition and necessary permissions for use and occupation and other details are given in good faith and are believed to be correct, but any intending purchasers should not rely on them as statements or representations of fact, but must satisfy themselves by inspection or otherwise as to the correctness of each of them.

•All measurements are approximate.



## Meon Road, London, W3

A stunning and completely renovated one bedroom flat on the first/top floor of this Victorian terraced property in the heart of Acton. Offered on an unfurnished basis, the accommodation comprises a bright and spacious reception room, fully fitted kitchen, double bedroom and bathroom with shower over the bath. Meon Road is conveniently located for Acton High Street, as well as the shops and amenities of Churchfield Road. There are easy transport links to central London, with South Acton and Acton Central overground stations close by. Available now.



- COMPLETELY RENOVATED
- RECEPTION ROOM
- DOUBLE BEDROOM
- GREAT LOCATION
- COUNCIL TAX BAND C
- FIRST/TOP FLOOR FLAT
- BRAND NEW KITCHEN
- BRAND NEW BATHROOM
- EPC D

**£1,650**



